

STAR WARS[™]

THE

MANDALORIAN



THE MANDALORIAN[™]
COLLECTOR'S EDITION
GLADIUS 12400T GAMING MOUSE
SETUP



starwars.com
© & [™] Lucasfilm Ltd.



I. PRODUCT LAYOUT



Eleven strategically placed buttons



Default button assignment

- | | |
|--|--|
| 1. Left click | 7. Lighting mode |
| 2. Right click | 8. DPI lock (500dpi)/ Side multifunction roller button |
| 3. Center button/ Navigation wheel click | 9. Scroll forward |
| 4. Forward navigation key | 10. Scroll backward |
| 5. Backward navigation key | 11. Quick selection mode switch |
| 6. DPI switch | 12. Molded USB plug |



II. INITIAL SETUP

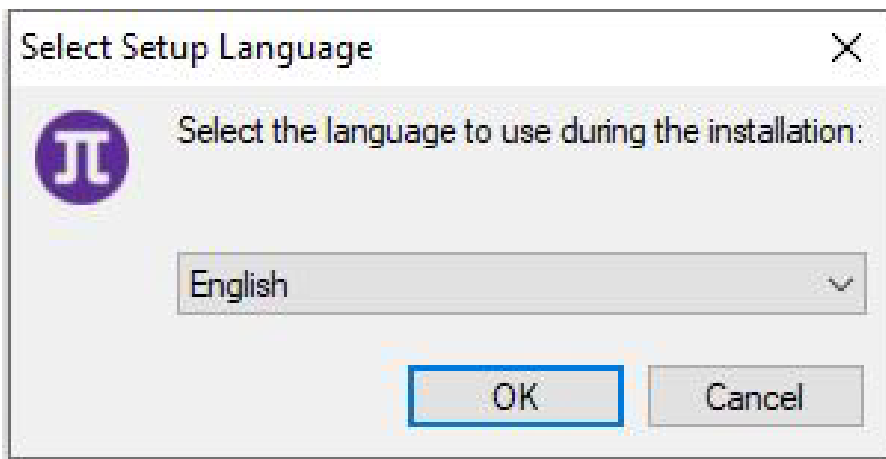


System requirements:

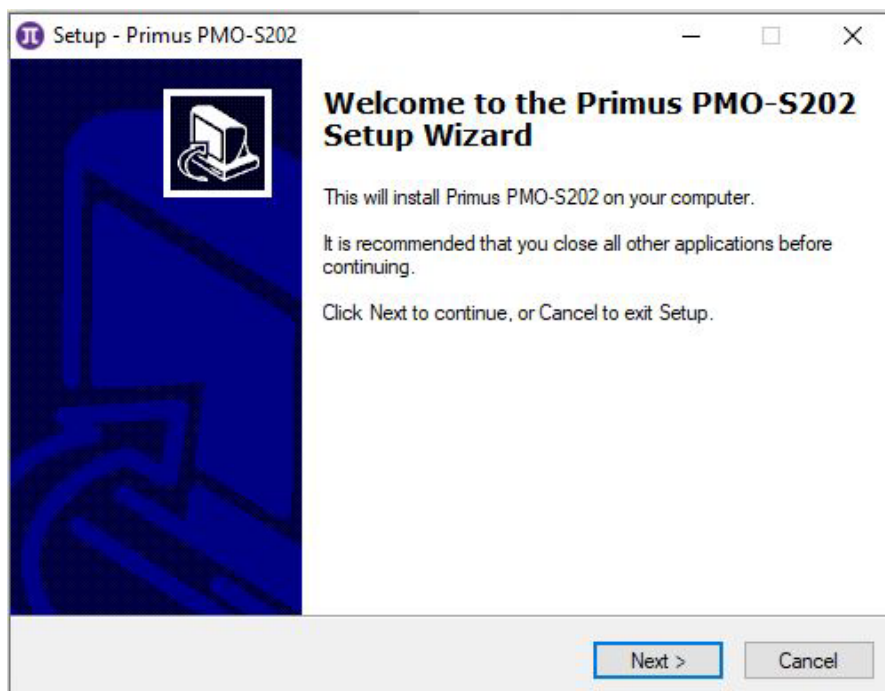
Windows XP / 7 / 8 / 8.1 / 10 or MAC OS

- Available USB port (v1.1/2.0)
- 4.9MB of free disk space

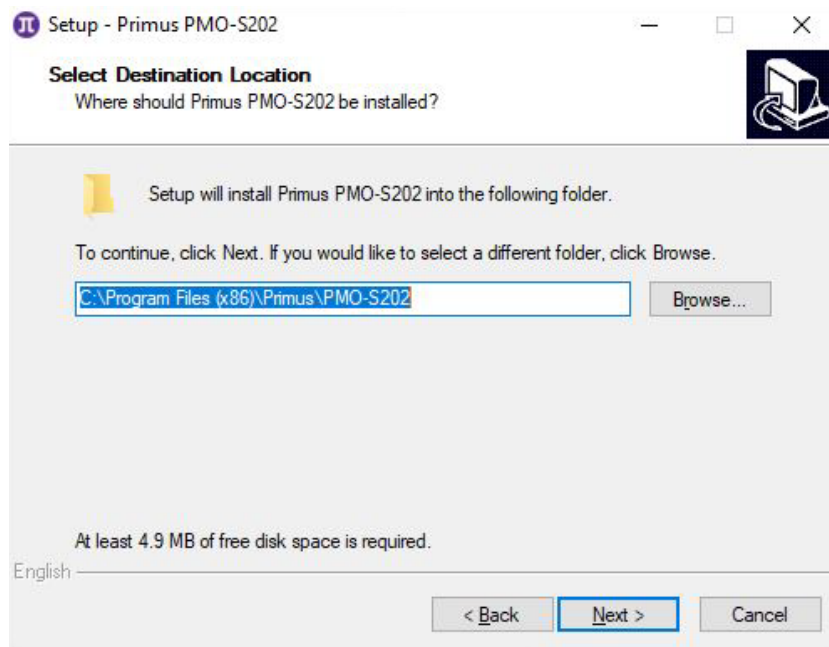
1. Turn on your computer.
2. Go to <https://www.primusgaming.com/software/> to download the gaming mouse software.
3. Run the installer program and follow the onscreen installation prompts.
4. You will be prompted to select the setup language. The available languages are English and Spanish. Click the down arrow to choose the preferred language. Once done, click on **OK**.



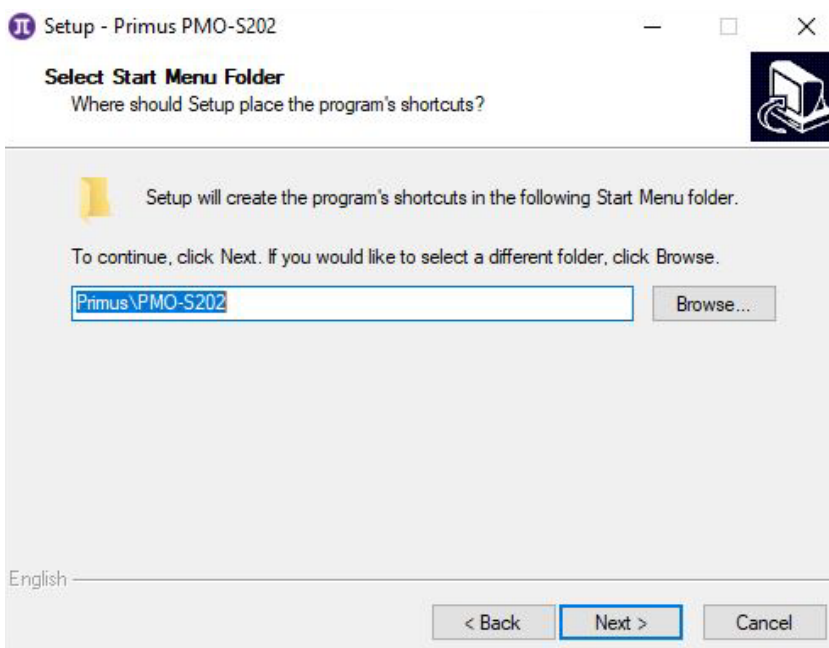
5. The welcome screen will appear. Click on **Next** to initiate the setup process.



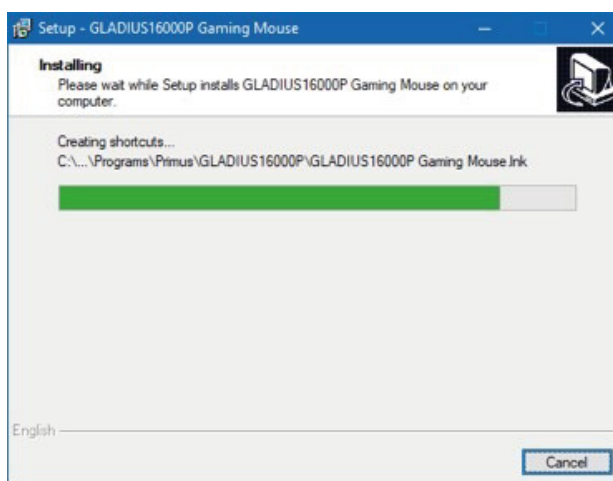
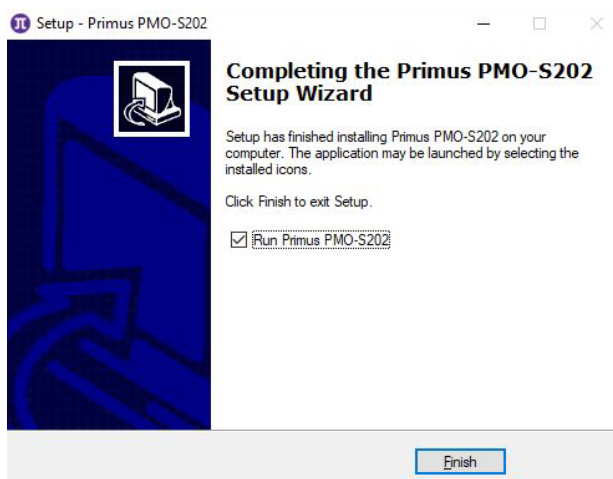
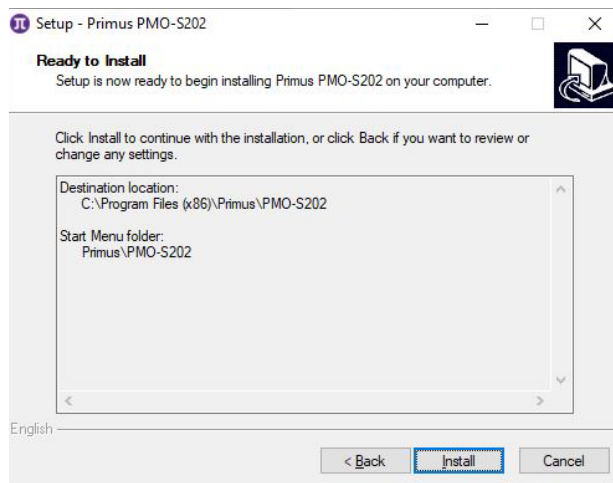
6. Select the destination where you want the software to be installed. We recommend keeping the default path, however you can choose a different location if desired. Please note the software will require 4.9MB of free disk space. Click **Next** to continue.



7. Select the Start Menu folder location where you want the software to be displayed. The default location is **Programfiles (x86)\Primus\PMO-S202** . You may change this path if desired. Click **Next** when done.



8. You are now ready to install your brand new Primus PMO-S202 gaming mouse. Click on **Install**.



9. When downloading is complete, click on **Finish** to conclude the setup.

10. Go to our webpage periodically to check for any software updates that might be available.



III. CONFIGURATION TOOL

- This gaming software allows you to configure the mouse buttons, sensitivity, scrolling speed, double-click speed, polling rate and profiles through a single user-friendly application.

- The **Restore** and **Apply** buttons on the lower right corner of the screen give you the option of storing or restoring to default any newly selected configuration parameters.

1. Button settings

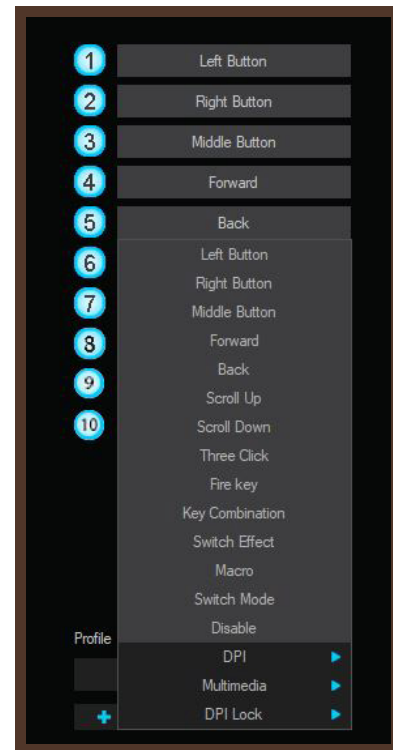


The software supports customizable button configurations.

- **Mouse button:** Left, Center, Right, Back, Forward, DPI±, fire key and macro keys, show desktop, switch effects, scroll up, scroll down, switch mode
- **Game configurations:** Fire button, 3 clicks, Key combination, and macro
- **Multimedia and Internet command:** Media Player, Play/Pause, Next, Previous, Stop, Mute, Volume up, Volume down, Email, Calculator, Explorer, Home page
- **DPI:** DPI+ and DPI- , DPI Loop
- **DPI lock:** All DPI values
- **Disable button**

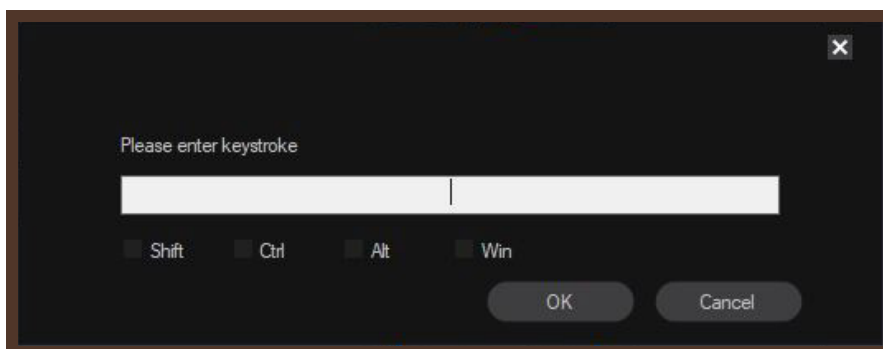
1.1. Setting up mouse buttons:

- Click on any mouse button you wish to change. This will bring up a sub menu of available commands.
- Choose one and then click **Apply** to save the setting.

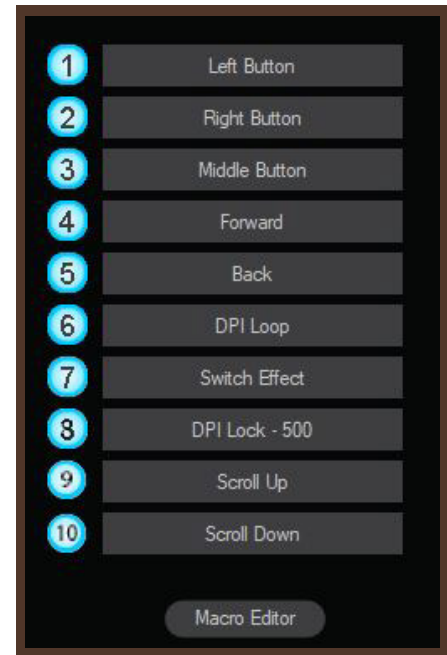
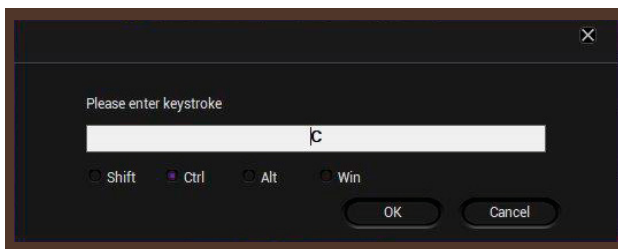


1.2. Key Combination mouse button:

- Click on the button you wish to change to bring up the key menu. Then click on **Key combination**.
- For illustration purposes, we will change the Middle button to a Key combination button.
- The following popup window will be displayed:

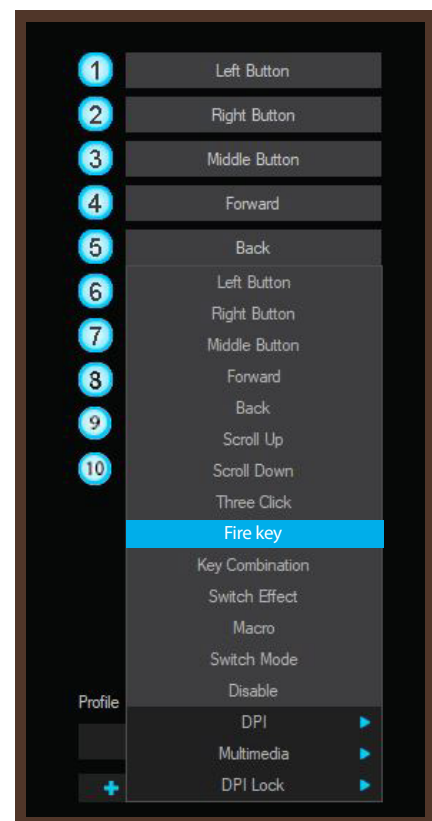


- You can press any key combination you desire for **Shift, Ctrl, Alt, and Windows.**
- For illustration purposes, we will choose a key combination command for Copy (click on **Ctrl** in the options and press **C** on the keyboard).
- Once done, press **OK** followed by **Apply** to save the setting. Now your middle mouse button can copy any highlighted text.

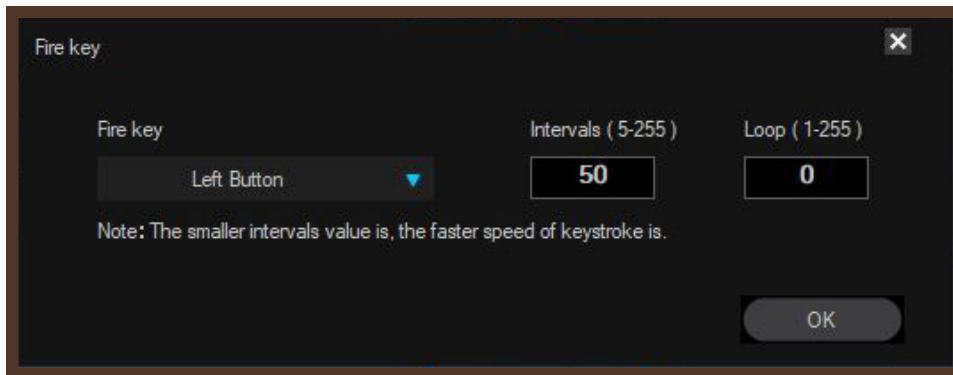


1.3. Fire Key for games:

- Click on the button you wish to change to bring up the key menu. Then, click on **Fire key** to enable it.
- For illustration purposes, we will change the Middle button to a Fire key button.
- The Fire key window will be displayed. Here you can assign a command from the drop-down menu.



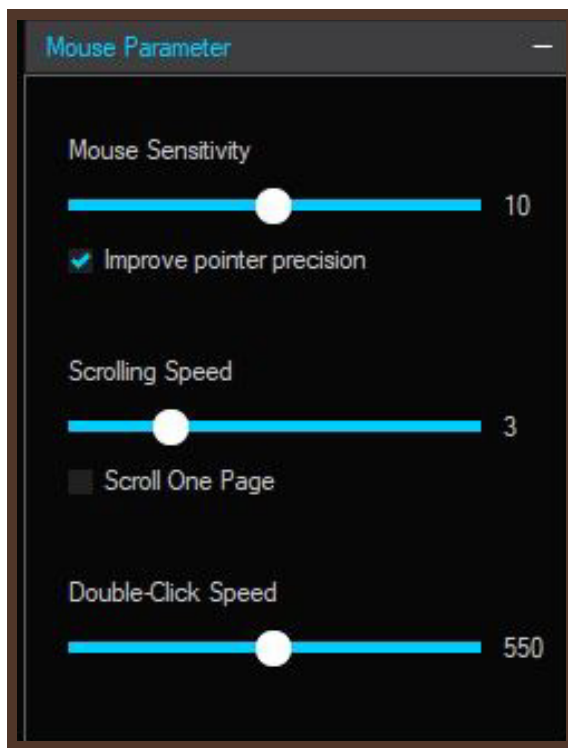
Select the keyboard or mouse button to assign the action. You can also change the speed, and how many times it activates the Fire key. Once done, click **OK** to save your settings.



2. Parameter settings

These settings are also found under Windows Mouse Properties.

This menu allows users to fine tune the Mouse sensitivity, Scrolling speed, Double-click speed, and Polling rate.



3. Profiles

- Multiple gaming profiles are available. These are useful for different game setups.
- Once you are done setting up your **Profile 1**, you can click on **Profile 2** and setup another profile, and so on.



- To save a backup of your profile, click on the **3 dots** followed by **Export profile**.
- Select a folder where you want to save the profile and enter a name to identify it. Click on **Save** when done.



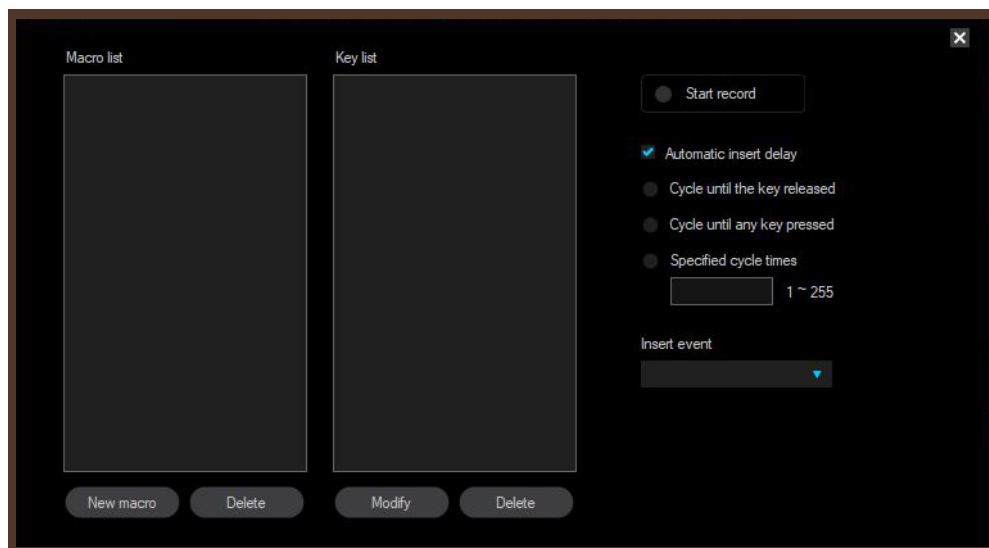
- To import a backup of your profile, click on the **3 dots** followed by **Import Profile**. Select the folder and the name of the profile you want to import, then click **Open**.

4. Macros

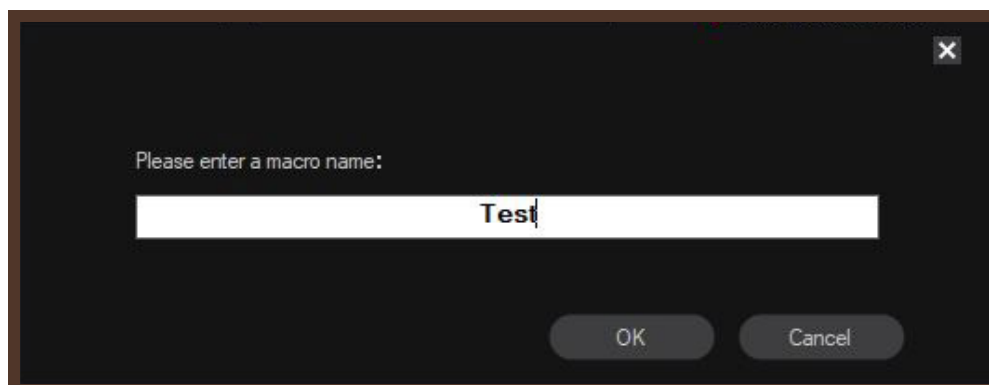
This menu allows you to assign the macro actions for your mouse.

The Macro software has no limitation as to the number of command sequences that can be configured. Each macro supports up to **64** keys.

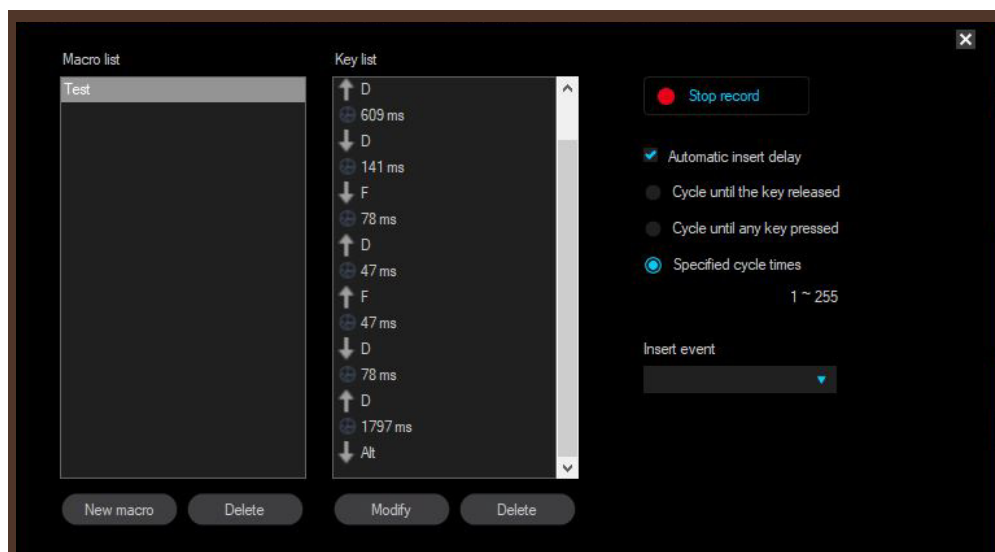
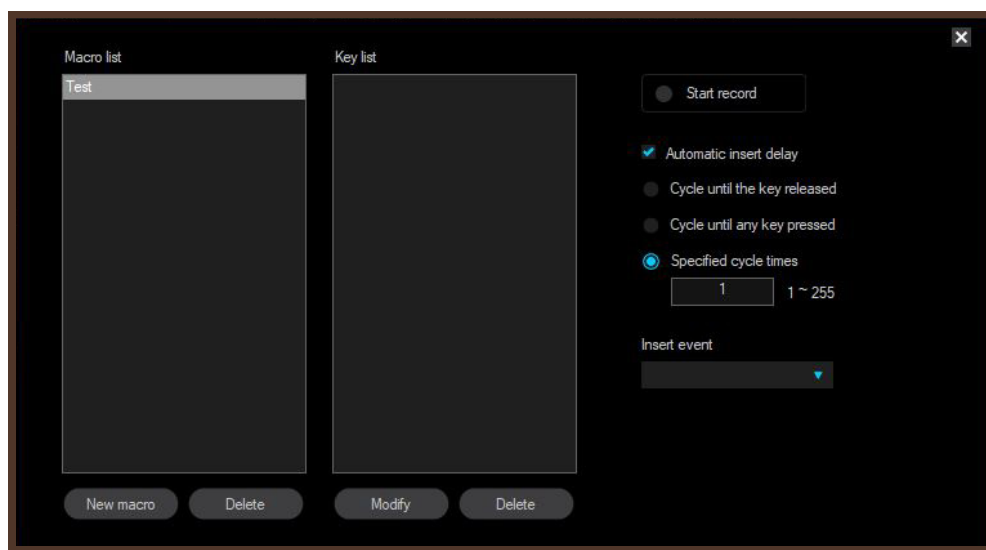
- Click on **Macro editor** on the main interface to open the macro configuration menu.
- Next, right-click on the empty space under **Macro list**:
 - **New macro**: Enter a name for your new macro.
 - **New macro folder**: Enter a name for your new macro folder.
 - **Import macro**: Import a previously saved macro.
 - **Batch Import**: Import a series of macros.
 - **Batch Export**: Export a series of macros.



- To create a macro, right-click on the empty space under **Macro list** followed by **New macro**. Enter a name, and then click on **OK** to continue.



- Click on **Start record**. The software will start recording all the keystrokes you would like to be added to the Macro. Once done, click **Stop record**.



- **Several options can be selected for the Macro key:**

- a. Automatic insert delay:** This will automatically record how long it takes between each key press.
- b. Cycle until the key released:** If you hold down the Macro button, it will continue to execute your macro over and over again until you release the Macro button
- c. Cycle until any key pressed:** Press it once and it will continue to execute your macro until any key is pressed.
- d. Specified cycle times:** You can enter a specified time to run that Macro.

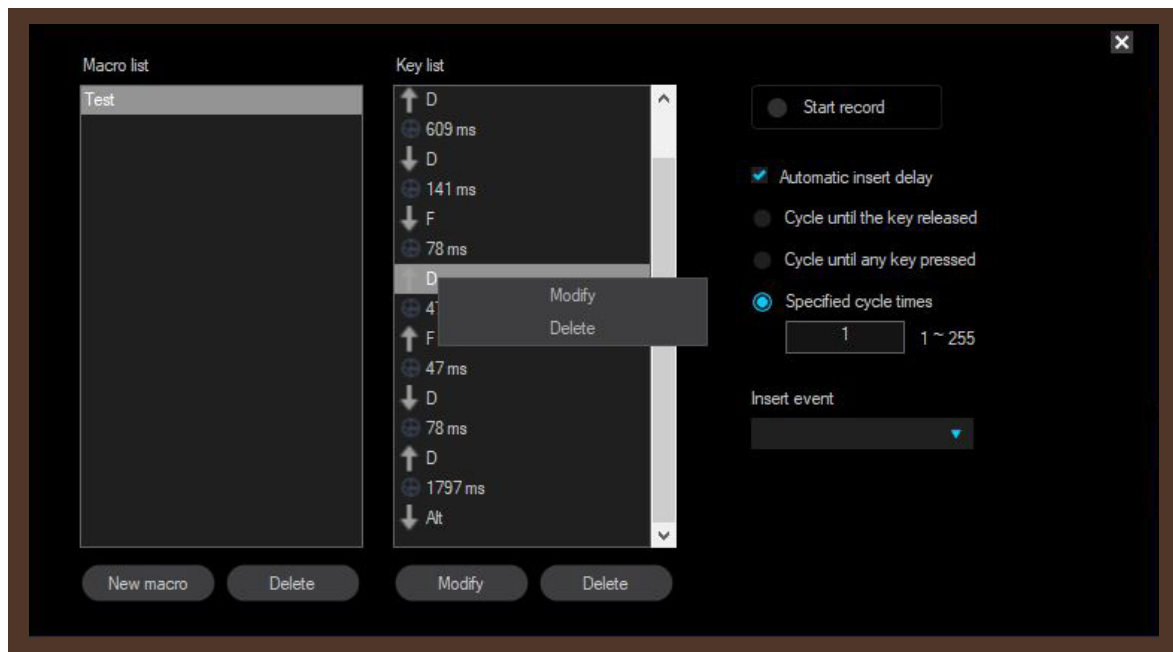
- A macro can also be modified or deleted.

- To **Modify** a macro, right-click the item in the Key list you wish to change. You can either modify the key stroke or the milliseconds between each keystroke.

- To erase the key or the time, select the **Delete** option by right-clicking on the desired item.

- **Insert event:** You can insert a certain event in the macro. Click the arrow under **Insert event**.

- A drop-down menu will come up with the following command options: **Keystroke**, Delay, Left button, Right button, or Middle button.

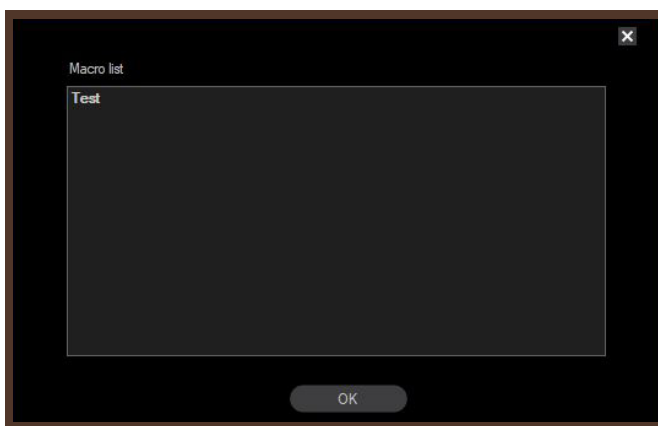


- Assign Macros to a mouse button:

- Click on the button to which the new command sequence will be assigned. Then click on **Macro** option from the menu.
- For the purposes of this guide, we will use the **Forward** button.



- Select a macro that you have previously created from the list, and then click **OK**.



Note: If the macro list is empty, it means that no sequence has been recorded. Go back to the previous section to configure your own macros.

- When done, click **Apply** to save the settings.



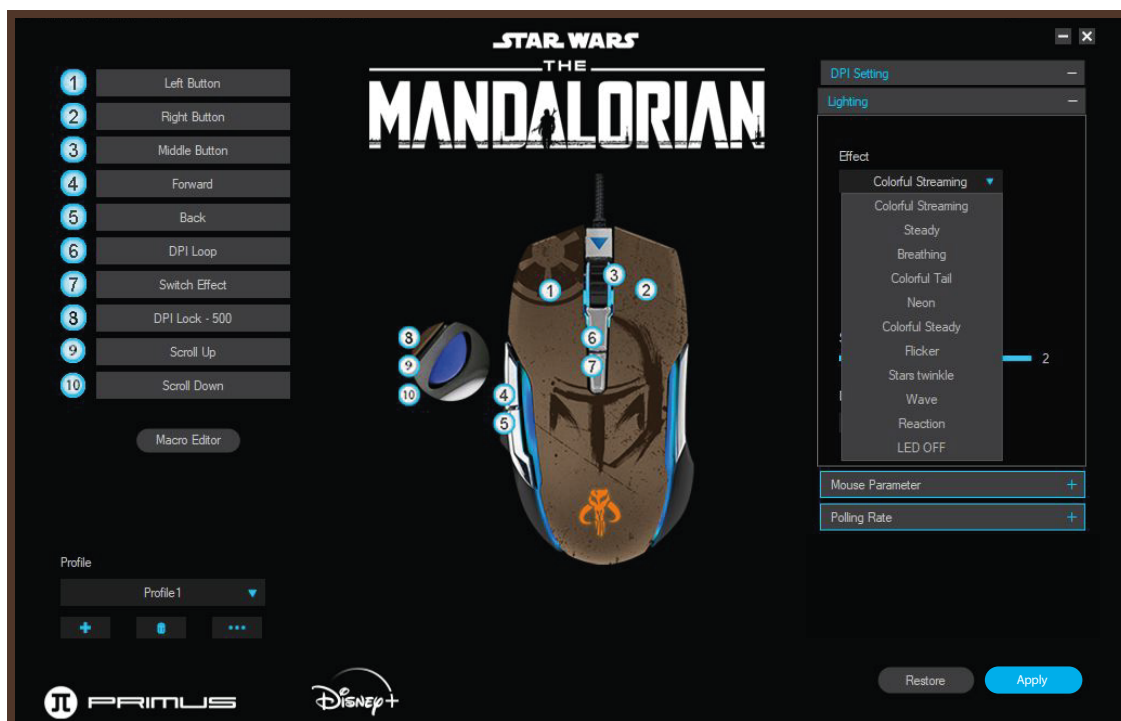
5. DPI setting

- This menu allows you to assign the DPI value for the **six** available settings



6. Lighting menu

- It includes the illumination effects and color selection for the mouse LED light.



7. Support

This section provides a direct link to our webpage, where you can find other products offered and look for the latest drivers and software updates. Click on the Primus logo to find out more.



8. Uninstallation

There are two ways to uninstall the software.

- Click **Start** and go to **Primus Gaming mouse** folder. Click on **Uninstall** and follow the onscreen prompts.
- You can also open the Control Panel-Program and function. Find the Primus Gaming Mouse option and click on **Uninstall**. Follow the onscreen prompts to conclude the process.



STAR WARS[™] THE MANDALORIAN

SOFTWARE INSTALLATION GUIDE

PMO-5202ML